

# Datasheet

# T8 LED TUBE

## T801K/T802K(60cm)

Kernel Version Led tube

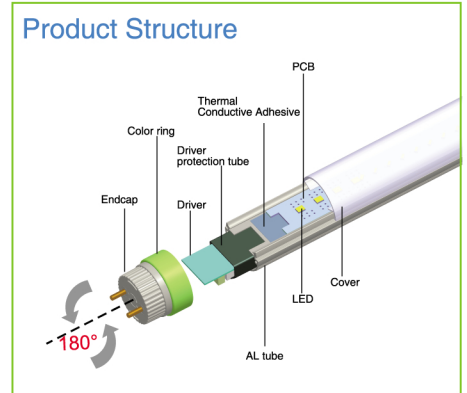
### Product Master:

**T801K:** U shape + SMD2835/AC90-277V/140°

**T802K:** D shape + SMD2835/AC90-277V/120°

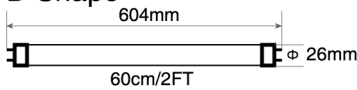
### Product Features:

- ☆ Universal input voltage : AC90-277V
- ☆ European Erp and USA DLC approved
- ☆ Patent deisgned Rotatable end cap
- ☆ Patent designed PCB with holes for heatig sink
- ☆ 5 years warranty

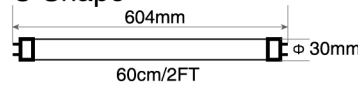


### Product explosion/ dimension drawing

#### D Shape



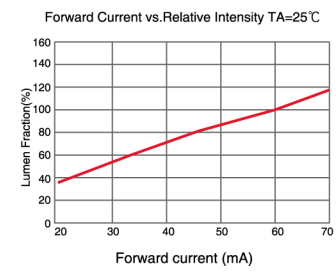
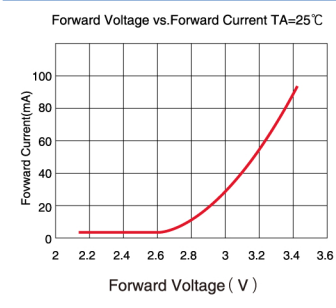
#### U Shape



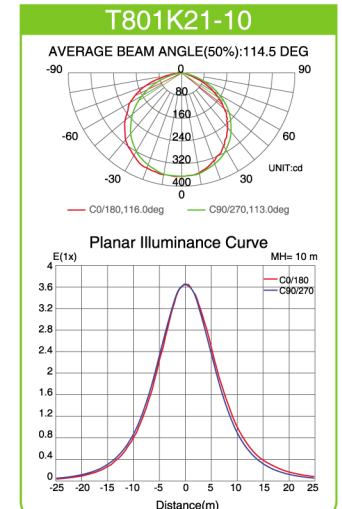
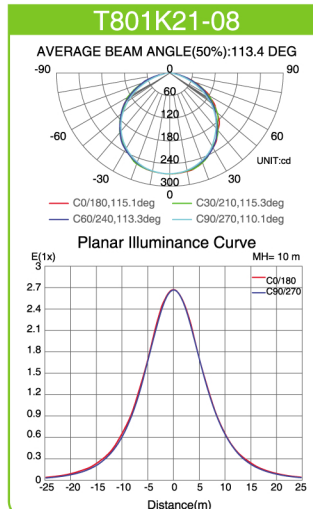
### Technical / Electrical Characters (at TA=25°C)

Item	Symbol	L=600 / 2ft	
Rated Power	W	8W	10W
Product Code	U Shape	T801K21-08	T801K21-10
	D Shape	T802K21-08	T802K21-10
LED type/Qty	SMD2835	60pcs	72pcs
Luminous Flux	Clear	typ.800Lm	typ.1050Lm
	Milky	typ.700Lm	typ.950Lm
Luminous Efficacy	Lm/W	Typ.95	
Lux Data	2M	65-66.5Lux	88.2-91.3Lux
	3M	28.8-29.3Lux	38.9-40.1Lux
Color Index	Ra	Typ.Ra>80	
Beam Angle	Degree	U Shape:140 Degree D Shape:120 Degree	
Power Factor	PF	PF>0.90	
Input Voltage	V	AC90-277V 50/60Hz	
Working Voltage	V	Constant DC36-42V	
Color Temperature	TC(K)	WW:2500-4000K, NW:4000-5000K PW:5000-6000K, CW>6000K	
LED Forwarder Current	mA	Constant 18mA	
Life Span	Hours	30,000-50,000 hours	
Quality Warranty	Year	5 years	

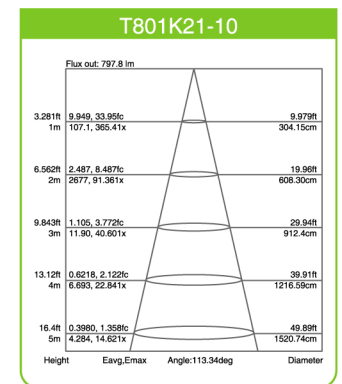
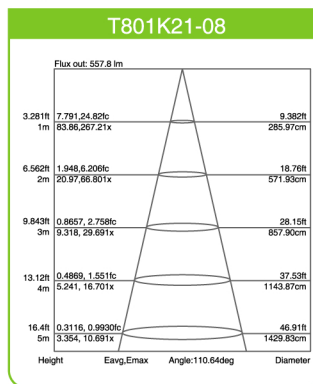
### LED voltage and current diagram



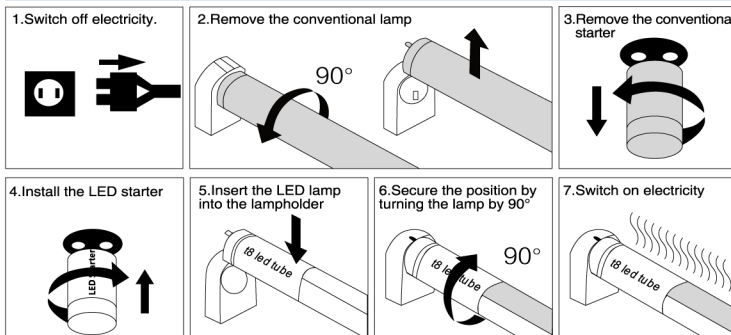
### Luminous Intensity Distribution/ Curve



### Lighting Output Lux Testing /5000K



### Installation instructions



Schematic steps of removing a fluorescent lamp and inserting a double-capped LED lamp

### Wiring diagram



1. Switch off electricity;
2. Remove the conventional lamp;
3. Remove the starter
4. Install the retrofit version starter into the starter holder;

5. Install the retrofit version LED lamp into the lamp holder;
6. Secure the position by turning the lamp by 90°;

### Package

Specifications	Symbol	Product Code	Inner Box	Outer Carton	Qty/Carton	Unit N.W	G.W/Carton
L=600 / 2ft	U Shape	8W	650 x 35 x 31mm	665 x 195 x 175mm	25 Pcs	225 g	7.9 Kg
		10W					
	D Shape	8W	650 x 35 x 31mm	665 x 195 x 175mm	25 Pcs	205 g	7.5 Kg
		10W					

### CAUTION !

- ※ Make sure that the power is off when installation is made.
  - ※ The lamp should be installed and operated by a qualified electrician or technician in accordance with relevant local codes.
  - ※ The Lamp is not dimmable.
  - ※ Unpack and carefully examine the product.
- Report any damage and save all packing materials if any portion of the product was damaged during transportation.